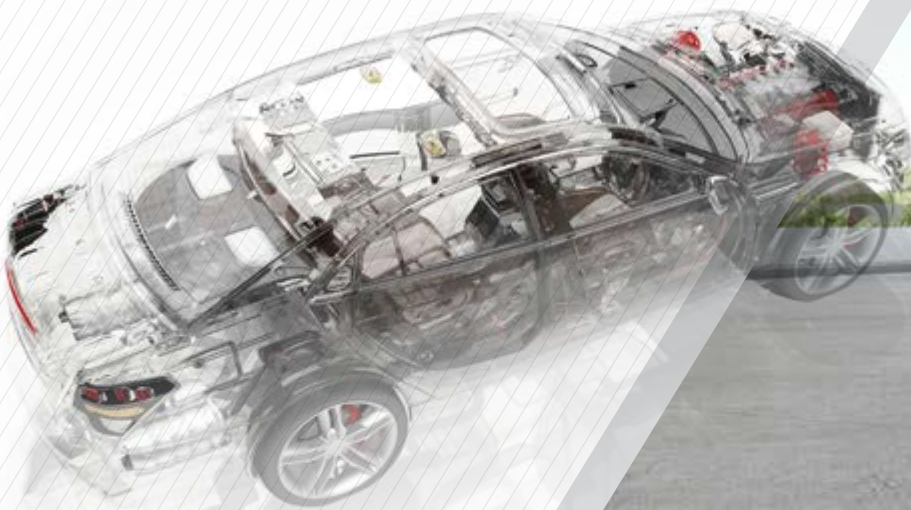


KPX HUNTSMAN POLYURETHANES AUTOMOTIVE



- ☑ *Care!*
- ☑ *Connect!*
- ☑ *Create!*

KPX HUNTSMAN POLYURETHANES AUTOMOTIVE

Embracing Changes, a New Start for us

KPX Huntsman Polyurethanes Automotive promises to lead Korea auto. industries and your success by PU tech. innovation and customer focused core-value based constant challenge to support a big change ahead of the industry occurred by rapid climate changes and 4th. Industrial revolution

We plan to develop new materials to create new value and to reinforce future competitiveness. Also cooperate with customer to establish new business model and create opportunities to step into the new market.

KHPUA will grow with you as the company that can make life enriching though eco friendly and high quality and tech. with unstoppable spirit of challenge.

At a glance

**Only one
KPX 2318**



**Sales KRW
746.7 billions**

**CAPA
345k tons**

**Enriching
Lives through
innovation**



**Sales KRW
4229.1 billions**

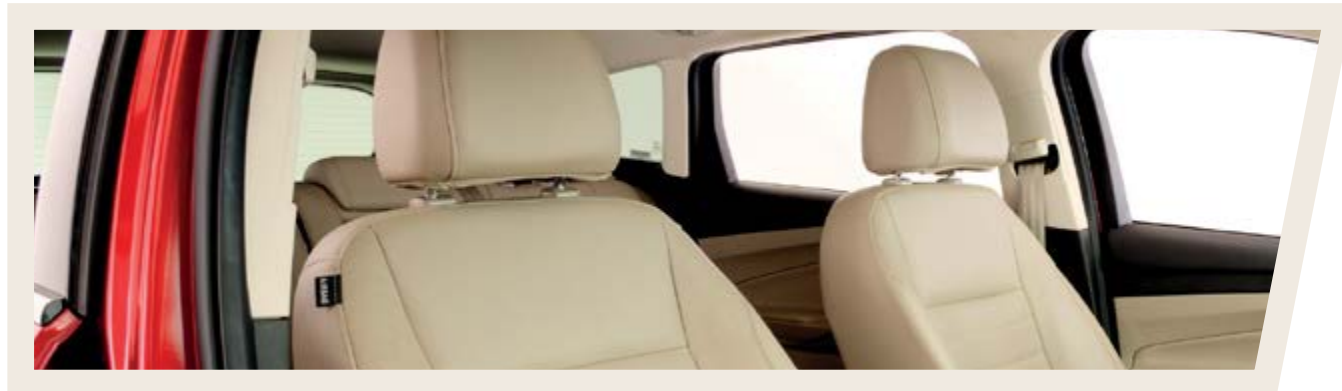
**CAPA
1,671mil tons**

※ Based on 2020



Superior Comfort Solution

Comfort – Light - Clean



Application

Seat, Head Rest, Arm Rest, Console Box, Door Trim

New Technology

Gradient Hardness Foam Pad

| Features |

- Primarily front seat cushion systems
- Super soft touch feeling by gradient hardness
- Maintain driving comfort over long periods
- Primarily for thin seats
- Customized hardness range on request
- Low emissions

High comfortness of Gradient Hardness foam can be visualized by DIC machine compare with HR foam

Seat (MDI/TDI blended type)

- Low density seat pad
- wide range of indexes
- Excellent flow
- Dual, triple hardness available

Seat (All MDI type)

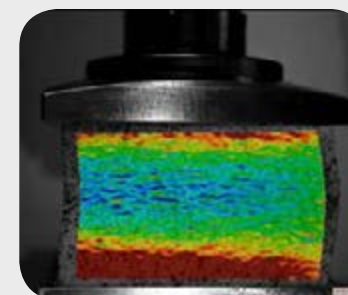
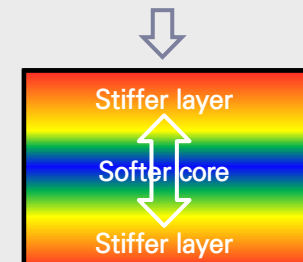
- High density slim seat pad
- Low vibration characteristics
- Differentiated offer via improved driving comfort with good properties
- Low emissions
- Dual, triple hardness available

Head Rest / Arm Rest

- Low density with wide range of hardness
- Reduced demolding time
- Low emissions
- Bio polyol available

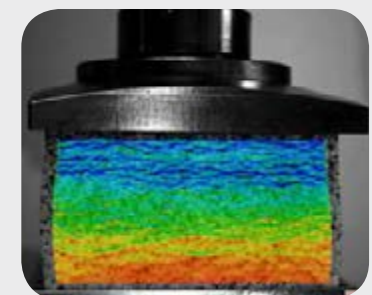
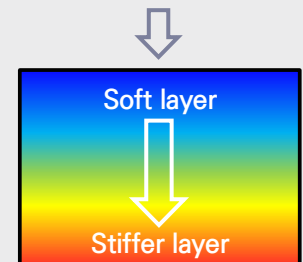
HR foam

Compression force



Gradient hardness foam

Compression force



Acoustic Solution(NVH)

Quite – Light – Fast - Clean



New Technology

Lowest Density Hood Liner System

| Features |

- Lowest density available
- Excellent acoustic absorption at wide range of frequency
- Tunable fire performance
- Excellent thermal foamability

Application

Dash Isopad, Tunnel Pad, Floor Mat, Fender Foam
 Engine Cover, Bonnet/Hood Liner, Head Liner

Dash Pad, Tunnel Pad, Floor Mat, Fender Foam

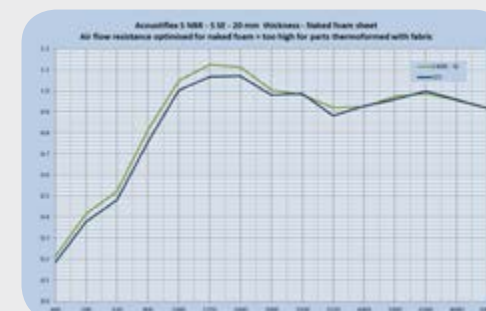
- Optimized for open / Closed type
- Low density available compare with standard foam
- Excellent acoustic absorption at wide range of frequency
- Reduced demolding time and Excellent flow
- Low emissions

Engine Cover

- Excellent thermal stability
- Excellent acoustic absorption at wide range of frequency
- Reduced demolding time and Excellent flow

Head Liner

- Excellent acoustic absorption performance
- Excellent thermal foamability
- Wide range of foam hardness available



Emotional Quality Solution

Soft – Warm - Sensible



Application

Instrument Panel, Steering wheel, Sunvisor

Instrument Panel

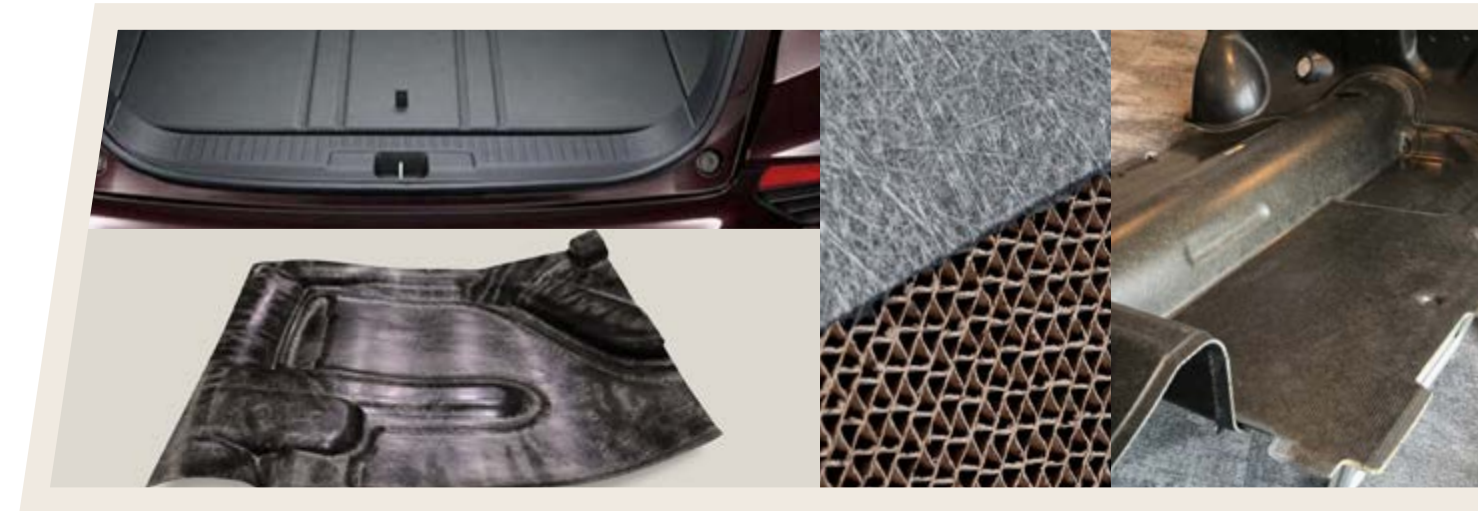
- Optimized for open / Closed type
- Fully formulated system for thin film TPU skin
- Excellent emotional quality
- Reduced demolding time and Excellent flow
- Low emissions

Steering Wheel

- Fully formulated system for foaming agent(physical/chemical)
- Excellent thermal stability and wear resistance

Functional Solution

Superior – Various - Unique



Application

Battery Insulation Pad, Luggage Board, Sunroof Liner

Luggage Board

- Excellent flexural strength and fast curing
- Complex geometry available

Sunroof Liner

- Maintaining physical performance while short demolding time
- Excellent flow and foamability
- Excellent weather resistance

Battery Insulation Pad

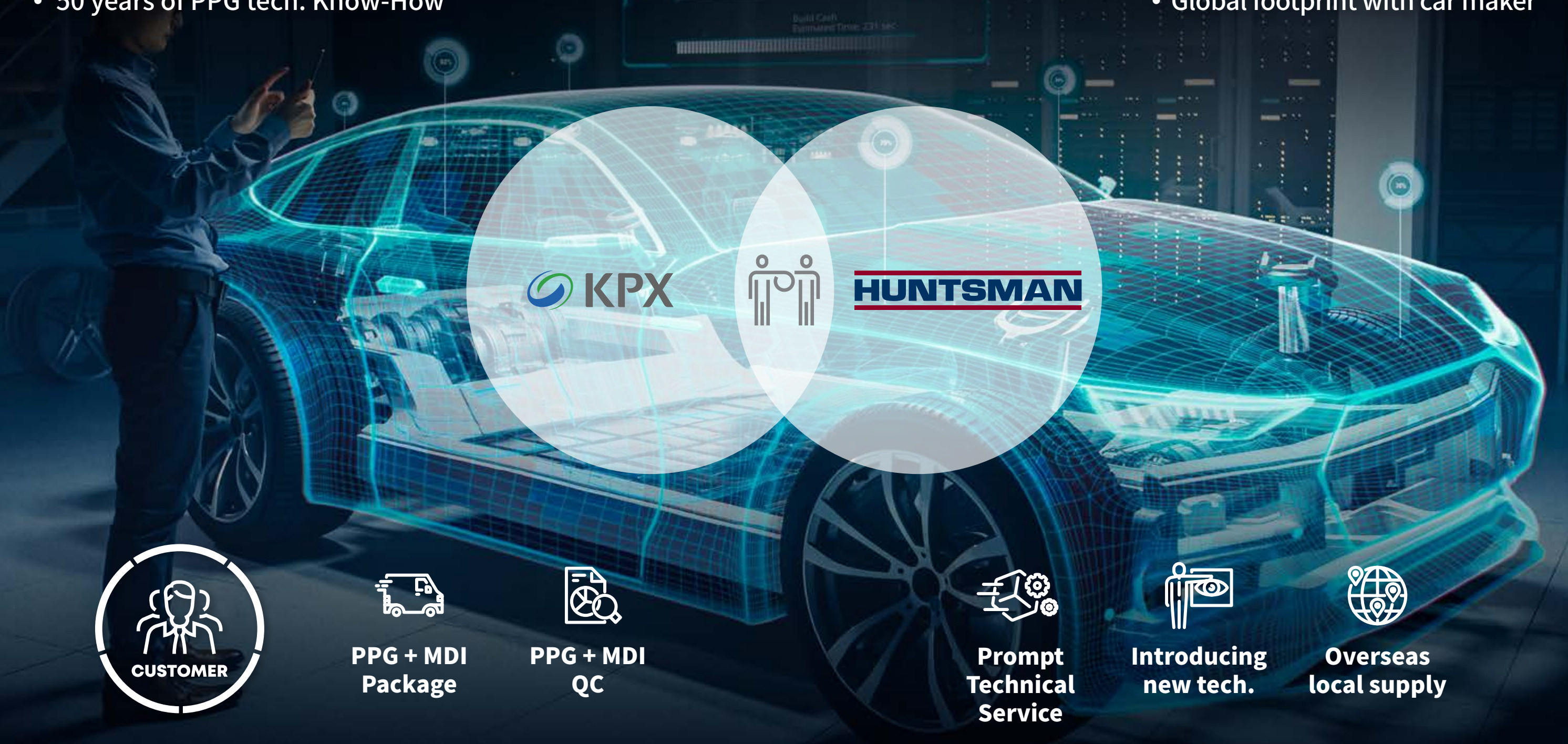
- Excellent thermal stability and fire resistant
- Super low density available

GMPU

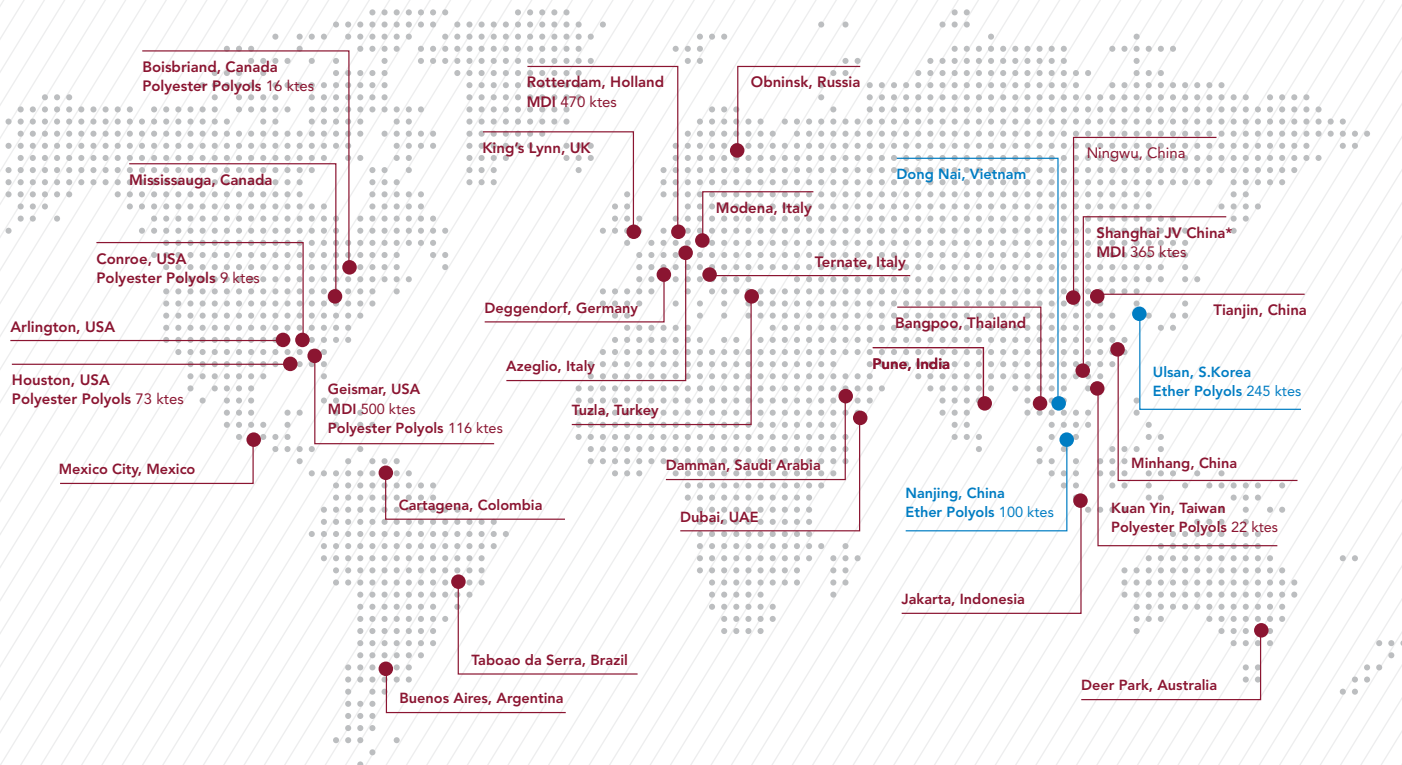
- Thin thickness available
- High glass mat content
- Easy to mold
- ※ Glass Mat reinforced PU composite

- Stable production, QC and logistic Service
- Providing PPG/MDI Total Solution
- 50 years of PPG tech. Know-How

- Major MDI maker
- Global 23 production base
- Global footprint with car maker



Care, Connect, Create!!!



HQ

- Seoul, S Korea

PPG / MDI

- system house
- Seoul, S Korea

PPG production

- Nanjing, China

Sales Office

- Georgia
- USA Chennai
- India

Global HQ

- Houston, TX, USA

Asia HQ, MDI Production

- Shanghai, China

Europe HQ / R&D

- Brussels, Belgium

Systems Houses

- China, Taiwan, Thailand
- Deer Park, Australia
- Pune, India
- Deggendorf, Germany
- Cartagena, Colombia
- Mississauga, Ontario

H-NMG Systems House

- Obninsk, Russia

APC Systems House

- Dammam, Saudi Arabia

Appliances & Construction Dev. Center & Blending

- Ternate, Italy

MDI & Polyol Production Blending

- Rotterdam, Holland

Aniline, MDI, Polyol Production & Blending

- Geismar, LA, USA

Polyol Research Catalyst Production

- Austin, TX, USA

Polyol & Catalyst Production

- Conroe, TX, USA

Automotive Development Center

- Auburn Hills, MI, USA

Technical Center

- Sao Paolo, Brazil
- Buenos Aires, Argentina
- Mexico City, Mexico



HQ/Sales 16th. Fl., 137 Mapodae ro Mapo-gu Seoul

Phone 02-2014-4067

Email sales@kpxhuntsman.com

R&D/Ulsan 103 Napdo-ro Nam-gu Ulsan

Phone 052-279-0315

Email md@kpxhuntsman.com